

Content Watchmakers' tool kit "Tradition"



PP No: **20-0001-007**



Boxwood

12 small wooden sticks

Usage: multiple

Dimensions: Ø 2mm L=150mm

PP No : **20-0001-001** (ø24)
20-0001-002 (ø33)
20-0001-003 (ø40)



Spare parts boxes

3 boxes in various sizes in platinum-plated brass with mineral glass.

Usage: for deposition of spare parts and small parts.

Dimensions: ø24 / ø33 / ø40mm h=16mm

PP No : **20-0001-004**



Tweezers f. rectifying watch hands (F)

Anti-magnetic tweezers made of stainless steel with flattened tips. High precision and fineness.

Usage: for rectifying watch hands

Dimensions: L=120mm

PP No : **20-0001-005**



Tweezers N°1

Anti-magnetic stainless steel tweezers with strong and neat pointed ends. High precision and fineness.

Usage: for wheel hole jewels

Dimensions: L=120mm

PP No : **20-0001-006**



Tweezers N°5

Anti-magnetic tweezers made of stainless steel with extra-thin tips. High precision and fineness.

Usage: for balance springs

Dimensions: L=110mm

PP No : **20-0001-008**



Leather file in goatskin

Goatskin file made of solid walnut wood with a leather skin in white colour.

Usage: For polishing of watch spare parts.

Dimensions: 6 x 7 x 160mm (Length of the leather = 70mm)

PP No : **20-0001-009** (ø 0.6 / ø1.0)
20-0001-012 (ø1.5 / konkav)



Watch hand setting tool

2 small tools, each containing 2 different inserts. The body is made of solid Makassar ebony; the inserts of black Delrin are attached to platinum-plated brass bolts.

Usage: for setting watch hands; inner diameter of the tips:
ø0.6 / ø1.0 / ø1.5 + 1 konkave

Dimensions: ø 5mm L=110mm

PP No : **20-0001-015** (ø0.5 à ø2.0)



Pin removing tool

Pin punch with 5 different driving pins. The body is made of solid Makassar ebony, the anvil of hardened stainless steel, the head of platinised brass and the driving pins of high-speed steel.

Usage: for driving out bracelet pins ;
Pin-ø : 0.5/ 0.8/ 1.0/ 1.5/ 2.0mm

Dimensions: ø 10mm L=110mm

PP No.: **20-0001-057**



Mikrofibre cloth

Usage: for cleaning spare parts without scratching them.

Dimensions: 34cm x 41cm

PP No.: 20-0001-021



Watchmaker's knife

Knife with two blades, one of which is sharpened. The body is made of platinum-plated aluminium and the bolsters are made of ebony wood.

Usage: one blade is used for cutting and the other for opening the spring cover watch case backs.

Dimensions: 85 x 18.6 Thickness = 5.4mm

PP No.: 10-0003-000



Casing cushion

Casing cushion, made of natural caoutchouc

Usage: For casing, loosening screws, touching up knocks, closing and opening case bottoms, etc.

Dimensions: 70mm x 50mm x 15mm

PP No.: 20-0001-022



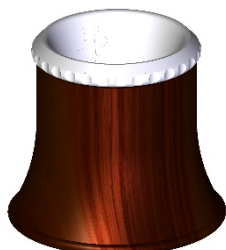
Watch hand removers

A pair of pointer lifters for removing the watch hands. The body is made of solid Makassar ebony, the lever of hardened steel and the other metal parts of platinum-plated brass.

Usage: you put the levers under the hands and lift them off.

Dimensions: ø 55mm h = 13mm

PP No.: **0941-15-032**



Watchmaker's loupe made of wood

Magnifying loupe with 2.5x magnification. The body is made of solid Makassar ebony ; the ring is made of natural anodised aluminium.

Usage: Magnifications to see the mechanism of the watch and other small parts.

Dimensions: \varnothing max = 38.5mm h = 41mm

PP No.: **20-0001-024** (n°1)
20-0001-025 (n°2)
20-0001-026 (n°3)



Pin-vices N°1, 2, 3

Pin-vices with a handle made of solid Makassar ebony. The base plates are made of stainless steel, the collets of polished hardened steel and the other parts of platinised brass. It is possible to adapt a square base plate to the pin-vice No. 2..

Gebrauch: for clamping different parts :

Pin-vice N°1: from \varnothing 0.2 to \varnothing 1.0

Pin-vice N°2: from \varnothing 1.2 to \varnothing 1.5

Pin-vice N°3: from \varnothing 1.5 to \varnothing 2.0

Dimensions: \varnothing 8 x 80/ \varnothing 10 x 93/ \varnothing 10 x 104mm

PP No.: **20-0001-027**



Watchmaker's hammer

Hammer for watchmakers. Handle made of solid Makassar ebony; hammer made of polished, hardened stainless steel..

Dimensions: $L_{(Total)}$ = 230mm $L_{(Head)}$ = 75mm

PP No.: 20-0001-028



Grindstone India

Rectangular, fine-grained (orange) stone of American quality..

Usage: For sharpening and honing.

Dimensions: □10mm L = 100mm

PP No.: 20-0001-029



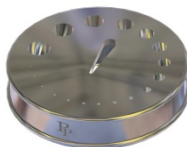
Brushes of the « Dial Makers »

The handle is made of solid macassar ebony, the cabochon of platinum-plated brass and the bristles of squirrel hair.

Usage: for removing small dust particles.

Dimensions: ø10mm h = 100mm

PP No.: 20-0001-030



Perforated plate

Plate with various holes in polished stainless steel.

Usage: for mounting parts with one axis, for ejecting pins, with 18 holes from ø 0.4 to ø 7.0mm

Dimensions: ø 55mm h = 12mm

PP No.: 20-0001-031



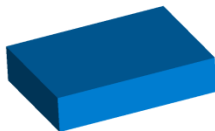
Universal Spring bars tool

For attaching and removing of the spring bars. The neck is made of solid Makassar ebony. The two ends are made of platinum-plated brass. The 2 inserts are made of stainless steel.

Usage: One side is used to push the spring bar and the other side is used to pull back the springbar in order to change the bracelet.

Dimensions: ø 10mm L = 139mm

PP No.: 20-0001-034



Rodico

Blue, deformable cleaning paste in stick form.

Usage: For cleaning balance pivots, finishing wheels, for removing fingerprints, finger stains, etc. on plates, bridges, dials, watch hands, jewellery, for removing excess oil on stones and for extracting broken pivots from stones.

Dimensions: 16 x 24 x 74mm

PP No.: 20-0001-036



Mounting pin

It is used for mounting. The body is made of solid Makassar ebony; the tip of black Delrin is attached to a platinum-plated brass bolt.

Dimensions: ø 5mm L = 120mm

PP No.: **20-0001-035**



Dust blower

Valve at the bottom of the blowgun (prevents suction through the tip). The outer body is made of solid Makassar ebony, the inner body of grey anodised aluminium and the nozzle of platinum-plated brass..

Usage: for cleaning dials and watch movements, etc.

Dimensions: ø 40mm L = 113mm

PP No.: **20-0001-038**



Torque screwdriver

Screwdriver with clockwise and anticlockwise release. The torque is adjustable from 5 to 55 mNm.

Technical details:

- Torque from 5 to 55 mNm
- Repeatability ±3
- Weight, 20 gr.
- Dimensions: ø10 x 85mm
- Tested with 104 releases
- 6 releases per round
- Triggering direction ↺ and ↻ / or blockage selectable

PP No : **20-0001-039** (ø0.5)
20-0001-040 (ø0.8)
20-0001-041 (ø1.0)
20-0001-042 (ø1.2)
20-0001-043 (ø1.4)
20-0001-044 (ø2.0)



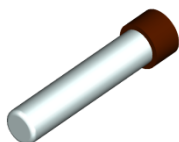
Screwdrivers

6 Watchmaker's screwdriver with various diameters. The handles are made of solid Makassar ebony; the metal parts are made of platinum-plated brass; the blades with parallel flanks are made of high-speed steel. Each screwdriver has an identification plate made of anodised aluminium, the colour of which corresponds to one blade width.

Usage: for slotted screws ; blade width: ø
 0.5/ø 0.8/ø 1.0/ø 1.2/ø 1.4/ø 2.0mm

Dimensions: ø 8mm L = 82mm (w/o. blade)

PP No: **20-0001-051** (Orange)
20-0001-052 (Yellow)
20-0001-053 (Black)
20-0001-054 (Red)
20-0001-055 (Grey)
20-0001-056 (Green)



Blades tubes

6 small tubes made of anodised aluminium. The colour of the tube corresponds to the colour of the screwdriver. The lock is made of solid Makassar ebony..

Usage: each tube has 2 replacement blades for screwdrivers

Dimensions: ø 8mm h = 34mm